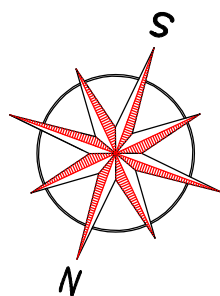
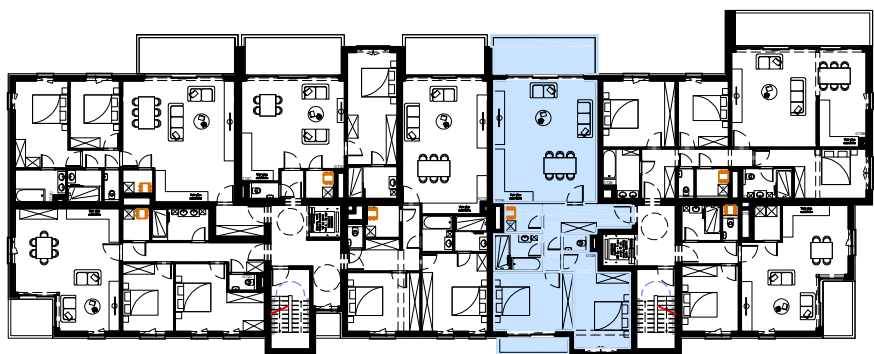
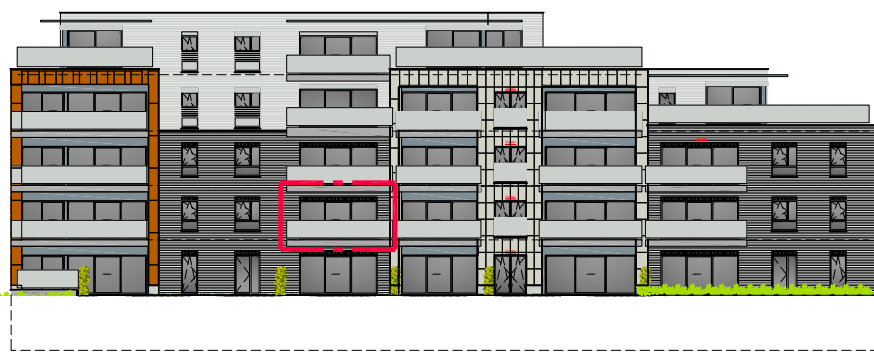


# Central Park

Rue Notre Dame de Grâce - Marche en Famenne

## Deuxième étage (Bloc B)



### Appartement B21

Appartement 2 chambres  
Surface brute de 105,13m<sup>2</sup>  
Balcons de 13,03 + 3,76m<sup>2</sup>

Plan éch.:1/75 (Format A3).



**Prix de vente:**  
Appartement:  
  
Cave:  
  
Parking:

