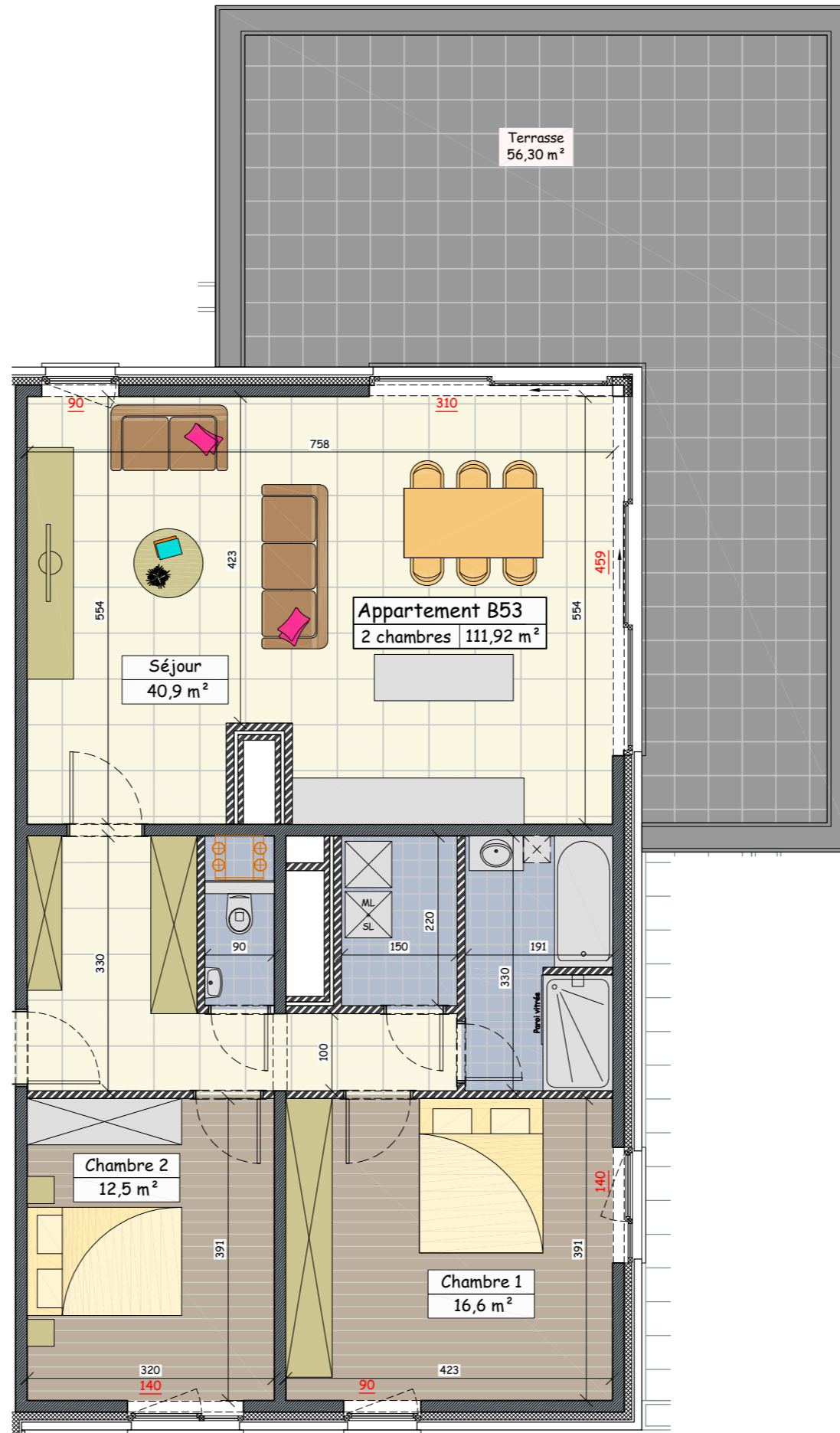
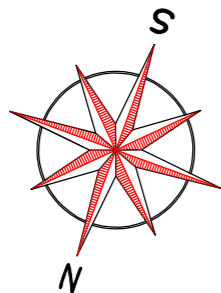
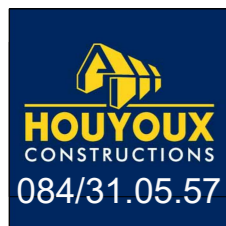


# Central Park

Rue Notre Dame de Grâce - Marche en Famenne

## Cinquième étage (Bloc B)



### Appartement B53

Appartement 2 chambres  
Surface brute de 111,92m<sup>2</sup>  
Terrasse de 56,30m<sup>2</sup>

Plan éch.:1/75 (Format A3).



### Prix de vente:

Appartement:

Cave:

Parking: